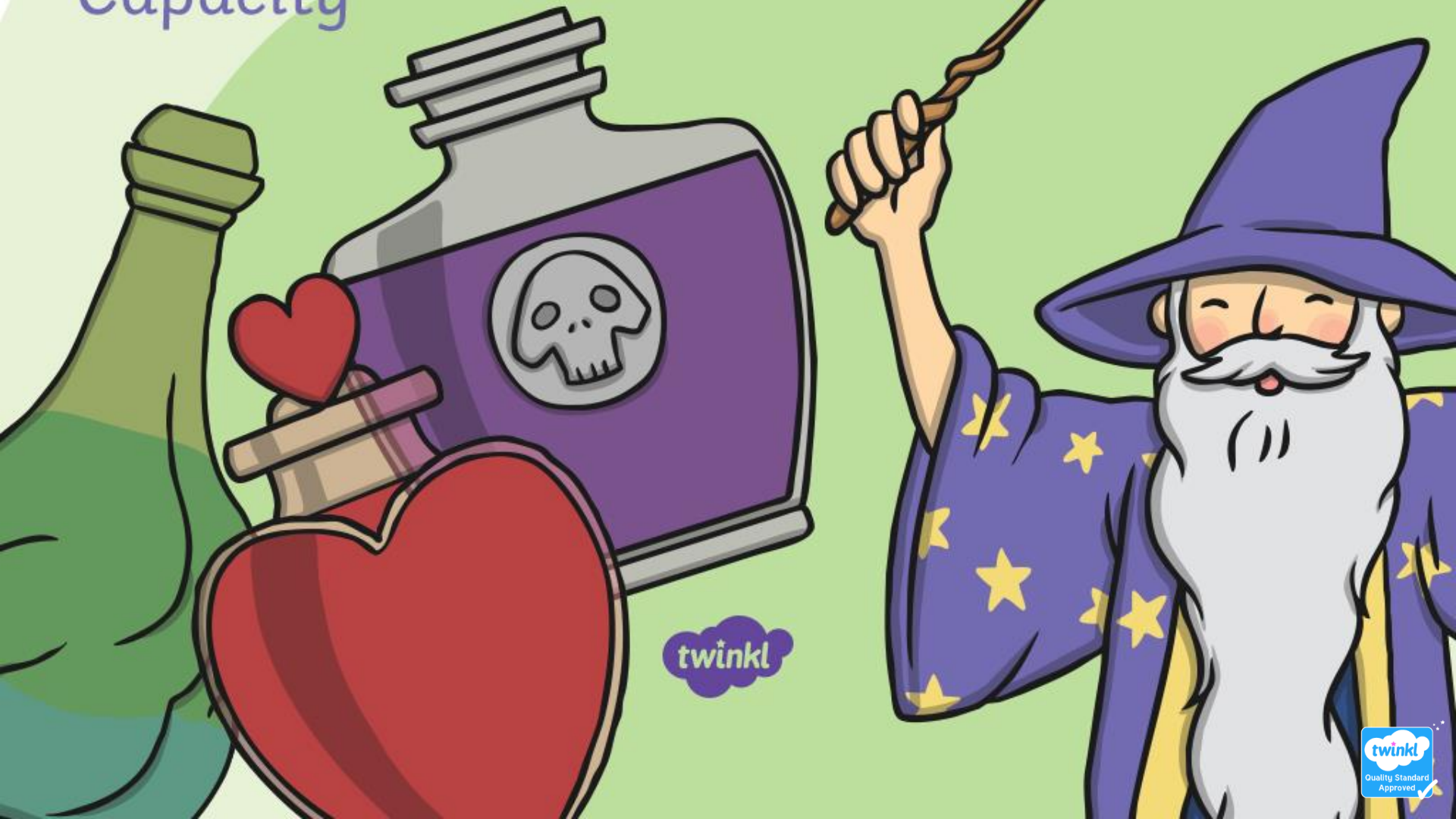


Making Potions

Capacity



twinkl

Pick the Potion

Will the Wizard, needs help finding the right potions.
Click on the potion that is **full**.



back

next

Try again!



Correct!



next

Pick the Potion

Will the Wizard, needs help finding the right potions.
Click on the potion that is **empty**.



Try again!



Correct!



next

Pick the Potion

Will the Wizard, needs help finding the right potions.
Click on the potion that is **half full**.



back

next

Try again!



Correct!

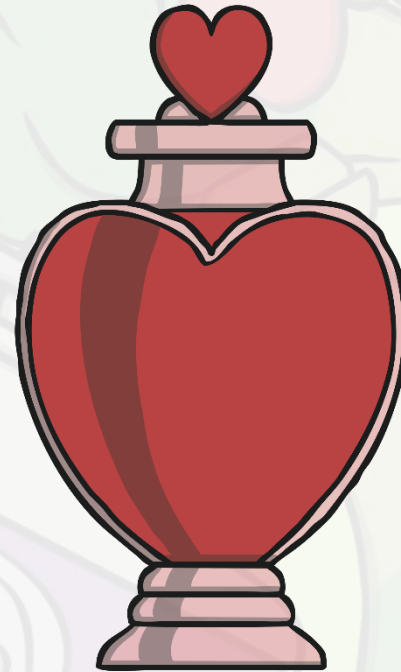
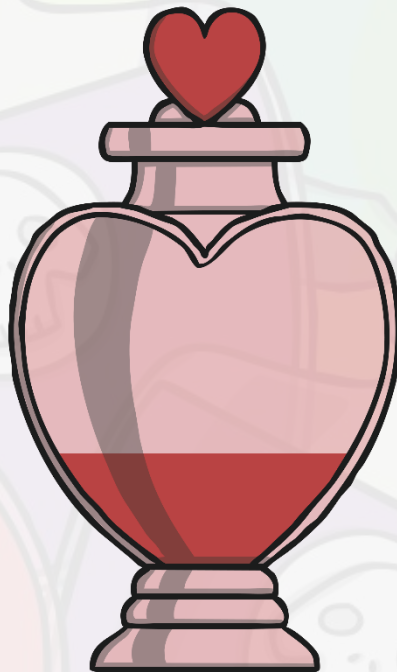
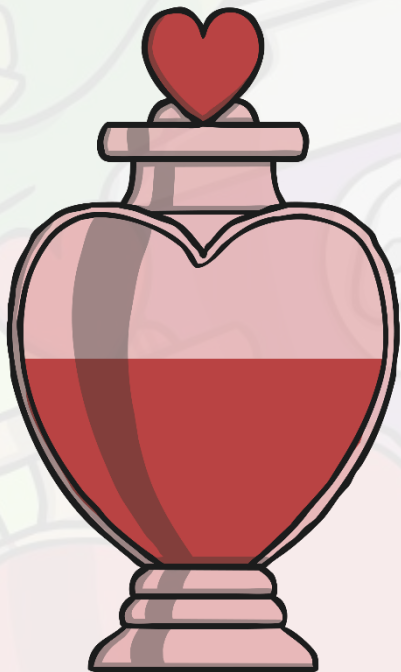


next

Order the Potions



Hocus the cat, needs help to put the potions in order for the wizard.
Click on the bottle that has the **least**.



Try again!



Correct!

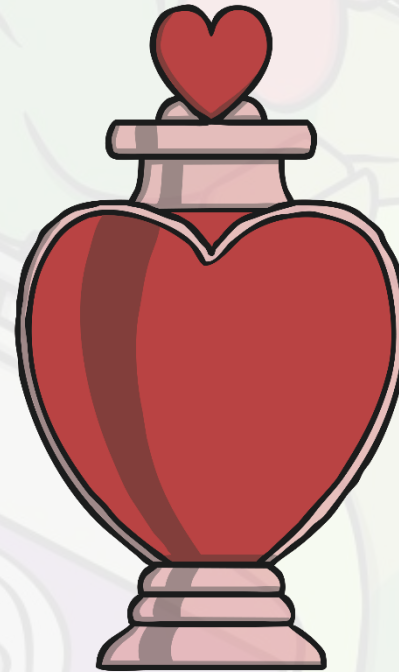
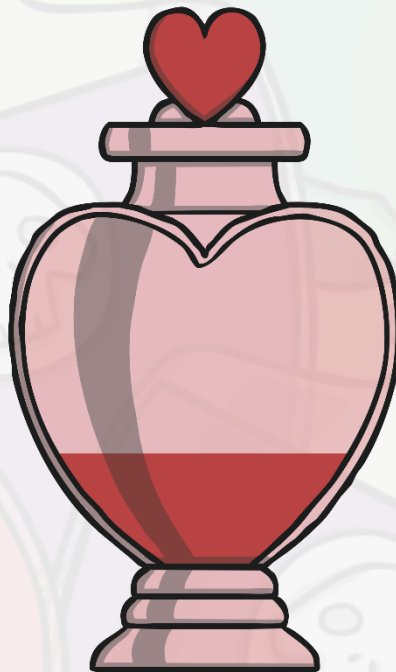
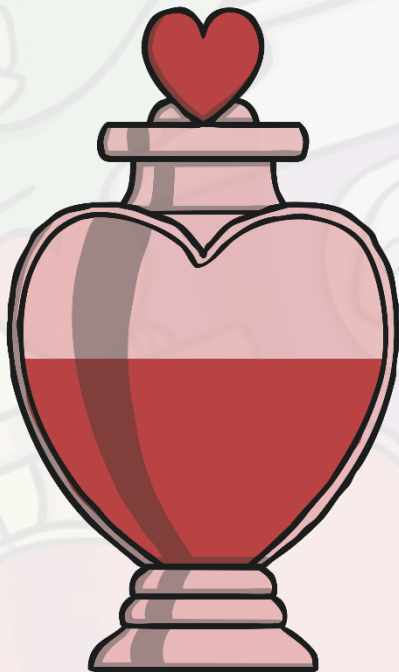


next

Order the Potions



Hocus the cat, needs help to put the potions in order for the wizard.
Click on the bottle that has the **most**.



back

next

Try again!



Correct!

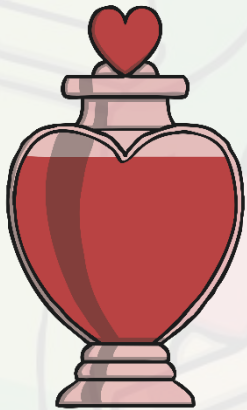


next

Order the Potions



Pocus, the other black cat, needs your help. Talk about where these two potions would go on the table from the **least** to the **most**. Click on each potion to check.



least



most



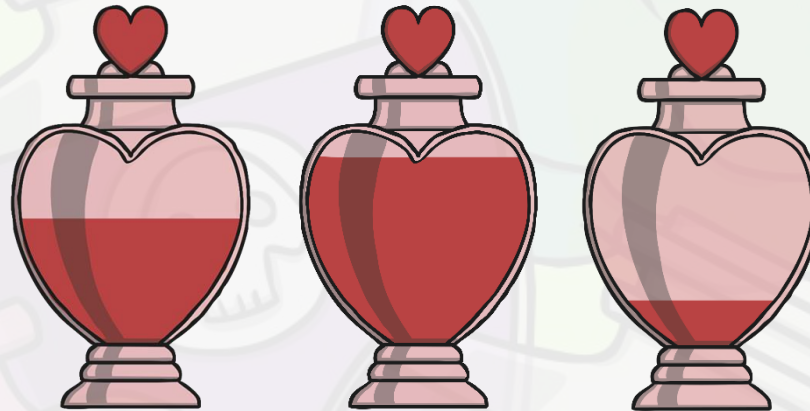
back

next

Order the Potions



Pocus, the other black cat, needs your help. Talk about where these three potions would go on the table from the **least** to the **most**. Click on each potion to check.



least

most

back

next

Order the Potions



Pocus, the other black cat, needs your help. Talk about where these four potions would go on the table from the **least** to the **most**. Click on each potion to check.



least

most

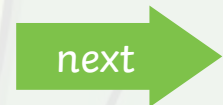
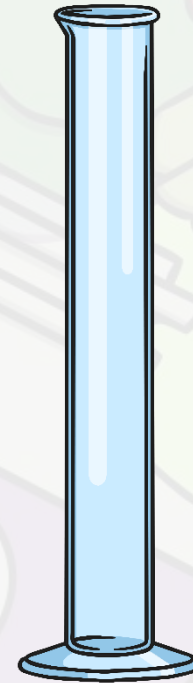
back

next

Choose the Container



Otti the owl, needs to choose the container that will hold the most liquid, to put his perfect potion into. Click on the container that will hold the **most**.



Try again!



Correct!

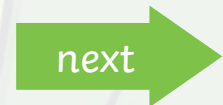
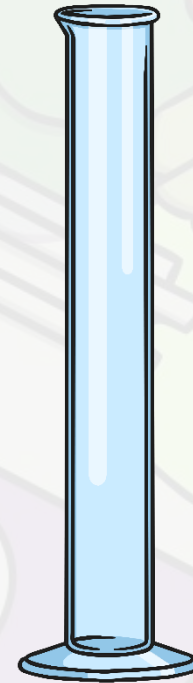


next

Choose the Container



Otti the owl, needs to make sure he throws away the container that will hold the least amount of liquid. Click on the container that will hold the least.



Try again!



Correct!



next

Wizard Challenge!



Will, the Wizard, has one final challenge...

He tried filling his potion bottle by pouring in 4 test tubes, but this wasn't enough to fill it.

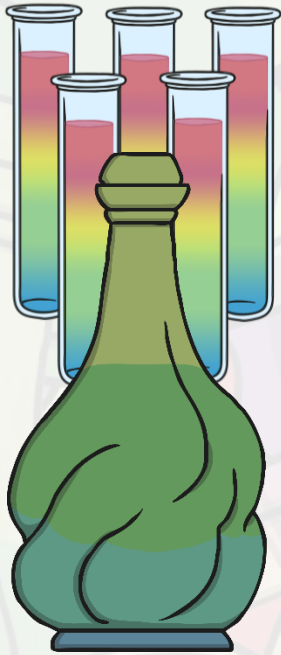
The next day, he started again and tried pouring in 6, but it overflowed!

How many test tubes should he use to fill up his potion bottle?

**Check
the
answer**

back

Wizard Challenge Answer!



back

finish

