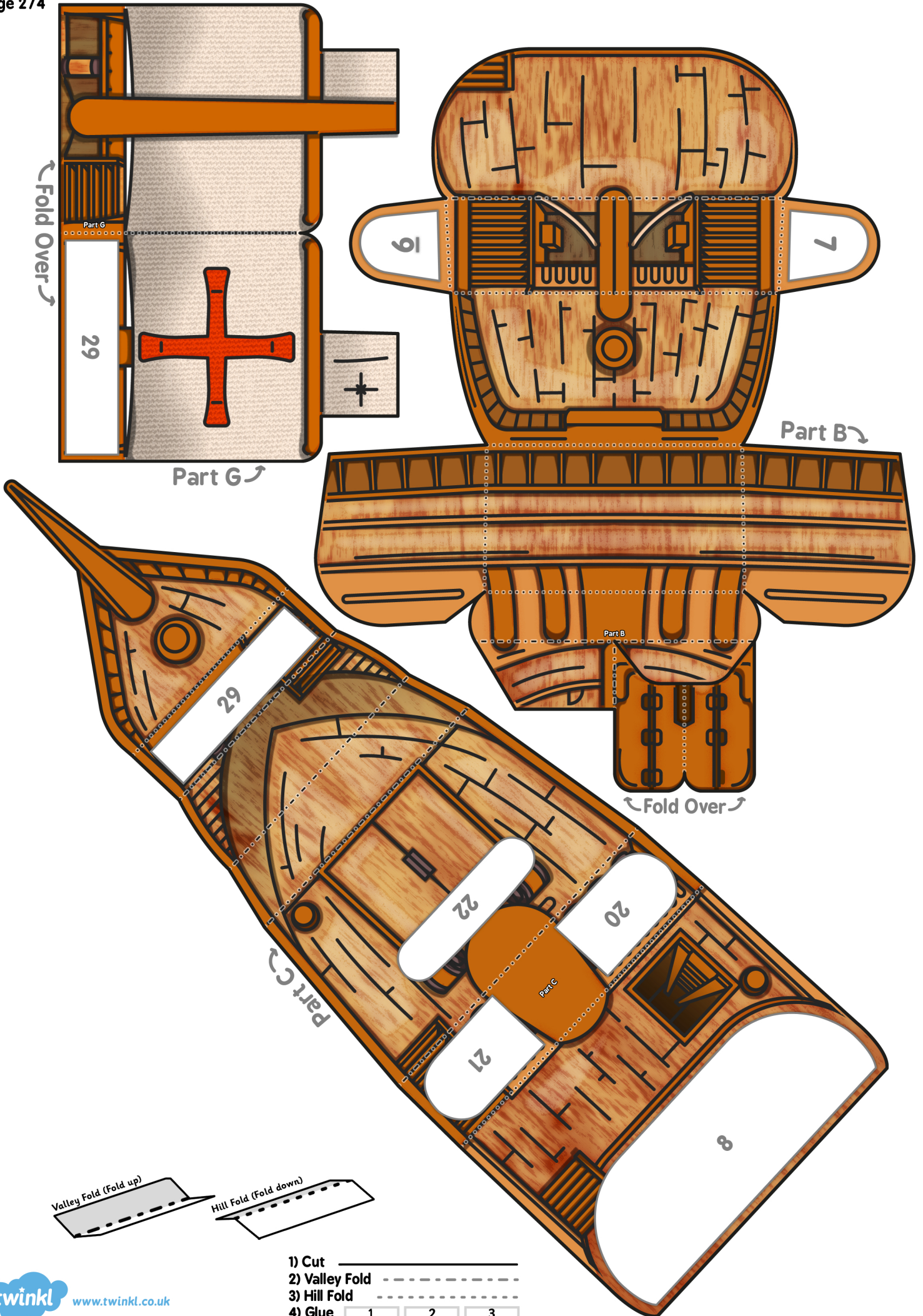


- 1) Cut _____
- 2) Valley Fold - - - - -
- 3) Hill Fold - - - - -
- 4) Glue 1 2 3

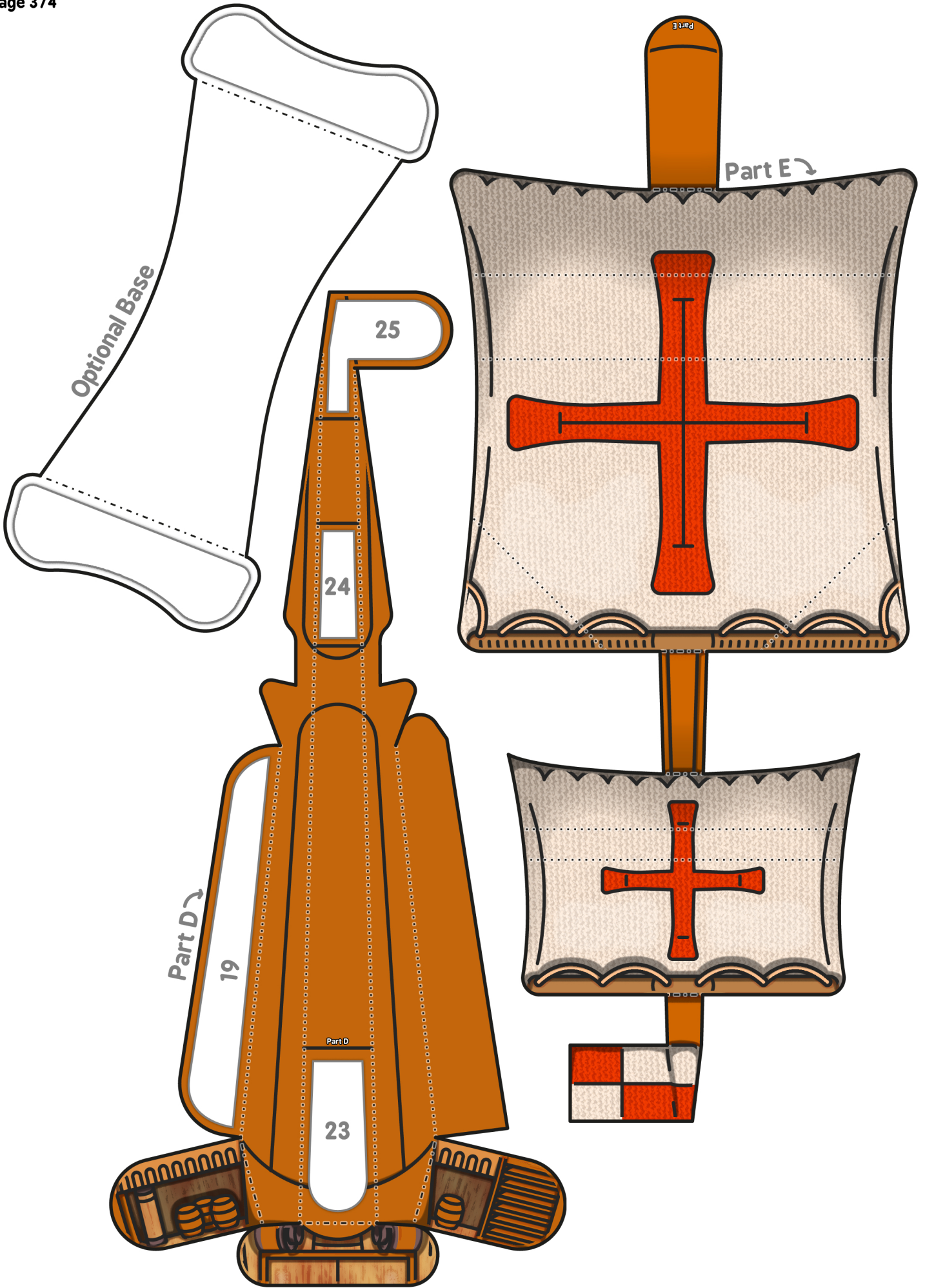
Valley Fold (Fold up)

Hill Fold (Fold down)



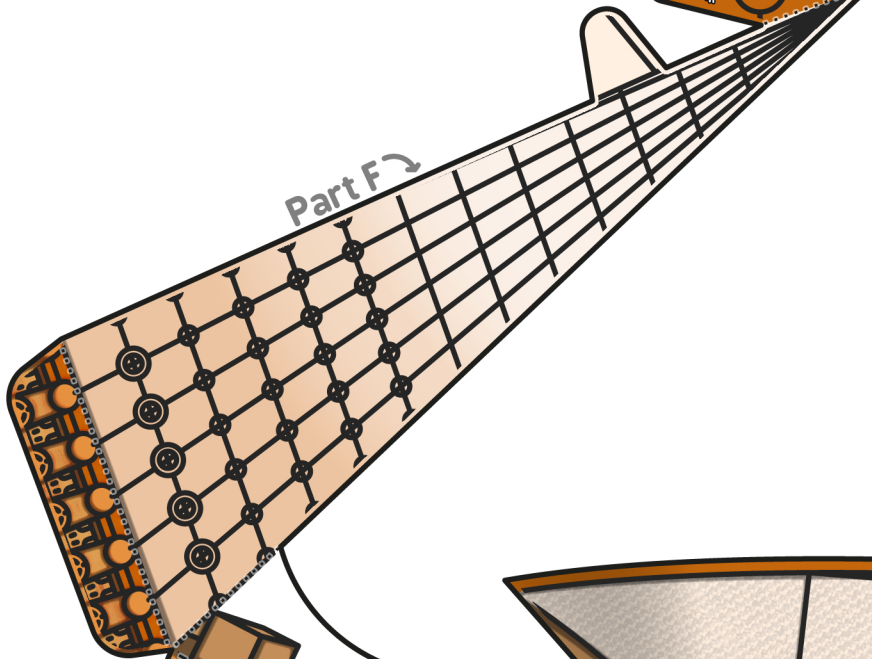
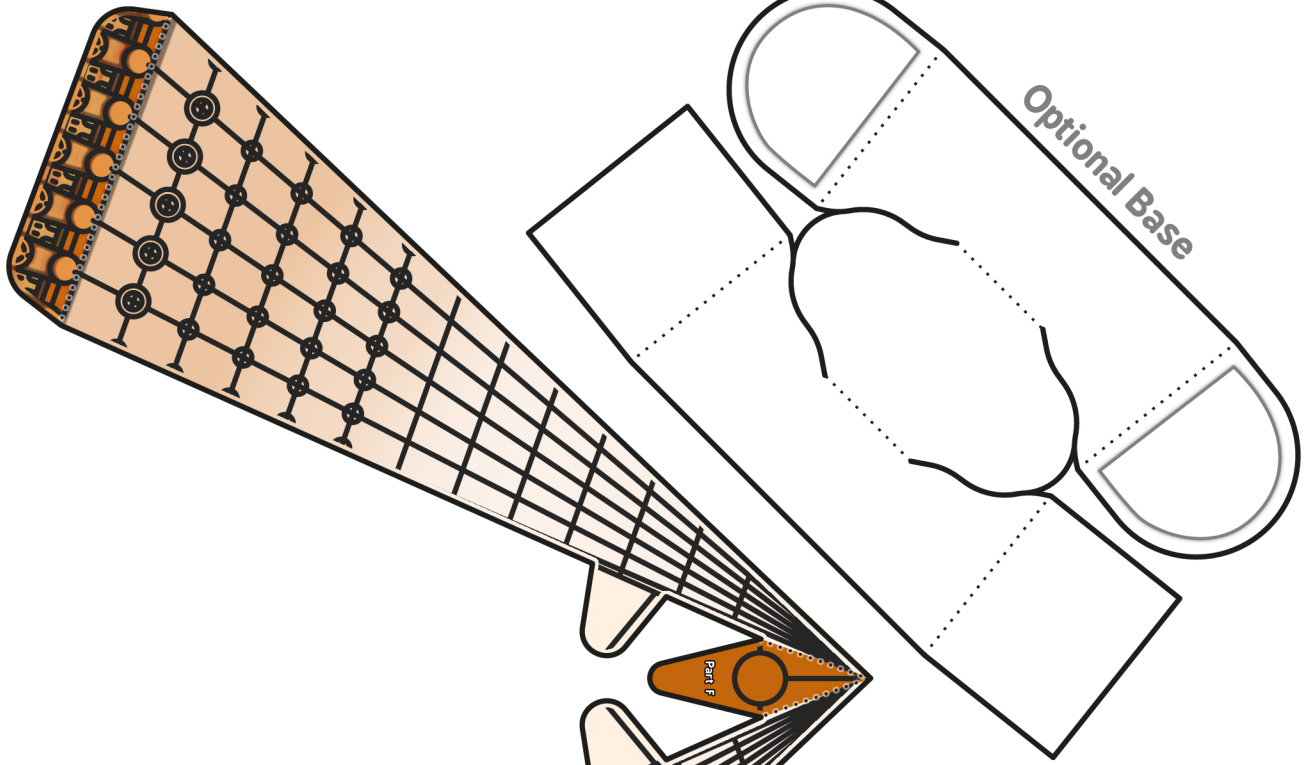


- 1) Cut _____
- 2) Valley Fold - - - - -
- 3) Hill Fold - - - - -
- 4) Glue 1 2 3



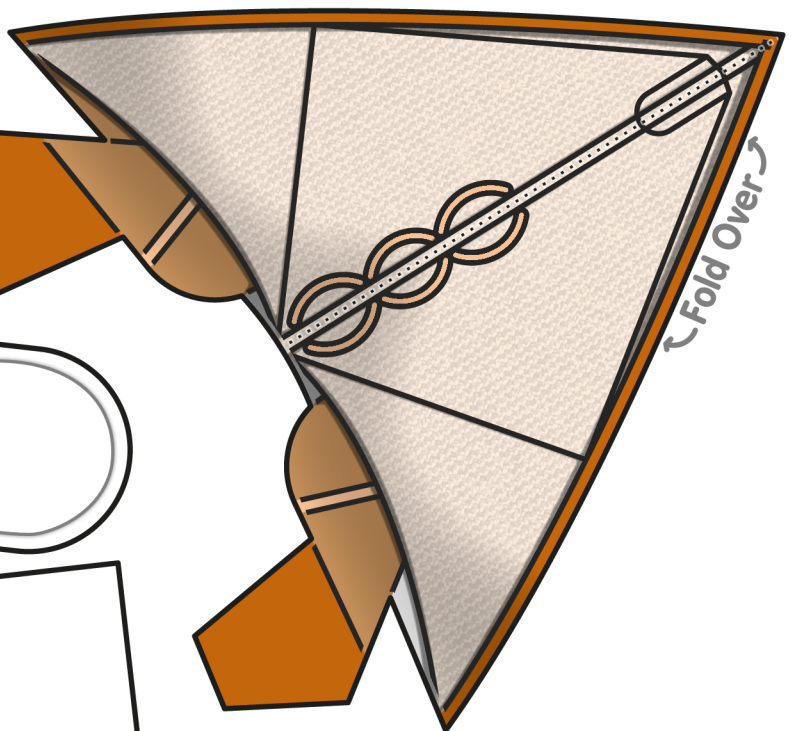
- 1) Cut _____
- 2) Valley Fold - - - - -
- 3) Hill Fold - - - - -
- 4) Glue 1 2 3



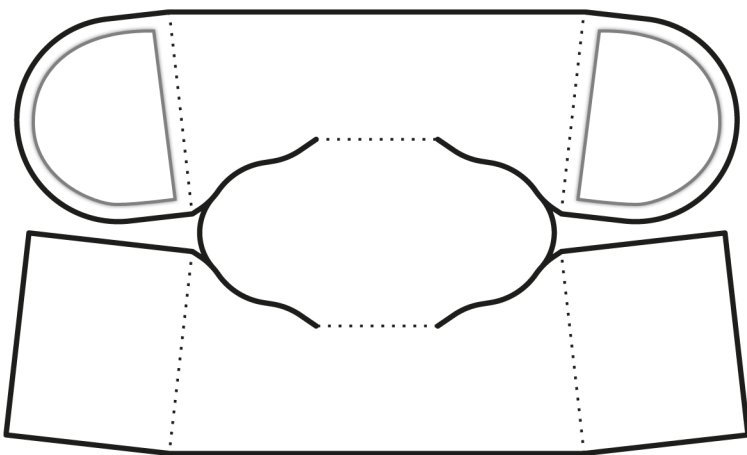


Part F

Optional Base



Fold Over



Optional Base

Valley Fold (Fold up)

Hill Fold (Fold down)

