

Unit 15

Time

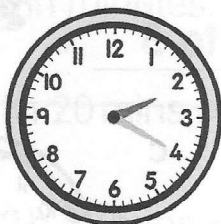
Date: _____

Practice I

Telling the time

1 Use **past** to tell the time.

a



b



c

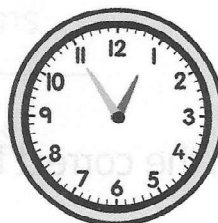


2 Use **to** to tell the time.

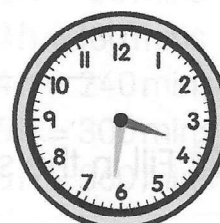
a



b



c



3 Use **past** or **to** to tell the time.

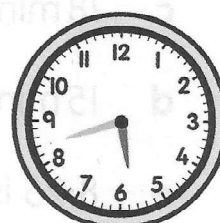
a



b

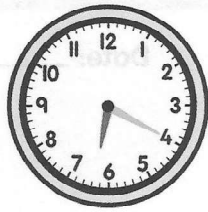


c



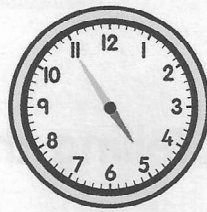
4 What time is it?

Example



6:20

20 minutes past 6



4:55

5 minutes to 5

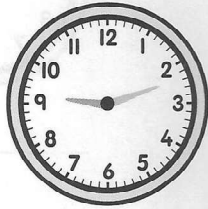
You can tell
the time in
two ways.



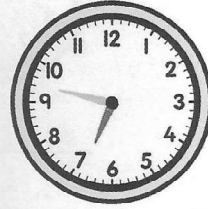
a



b



c



5 Fill in the spaces with the correct time.

a 10 minutes past 6 is _____.

b 20 minutes to 10 is _____.

c 18 minutes past 2 is _____.

d 15 minutes to 1 is _____.

e 8:25 is _____ minutes past _____.

f 6:50 is _____ minutes to _____.

Game



8 Show and tell the time!

Players: 2

You will need:

- a clock with movable minute and hour hands

- 1 Player 1 shows a time by moving the hour hand and the minute hand.



- 2 Player 2 tells the time in two different ways.



- two fifty
- 10 minutes to 3

- 3 Player 1 checks the answer. Player 2 gets 1 point for a correct answer.



- 4 Player 2 shows the time and Player 1 tells the time.



- five seventeen
- 17 minutes past 5

- 5 Take turns to show and tell the time. Play five rounds.

The player with the most points wins!

