

# Core signs for our topic this term.



Our topic this term is 'What do adults do all day"  
Here are some related signs for you to practice.

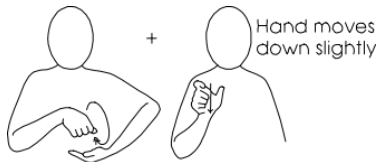
work



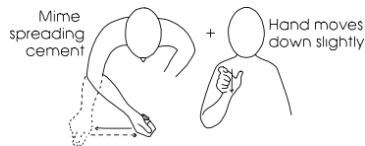
teacher



chef



builder



Don't forget to say the words as you sign!



## Wren Class Information Booklet

Term 1  
Sept/Oct  
2025



### Class Teacher and TAs

Victoria Butler (Teacher)  
Hubert Flavius (TALL)  
Shelley Deadman (TA)  
Nikki Westwood (TA)  
Sam Williams (TA)  
Shelley Giltrap (TA)  
Andrea Bean (MDS)

### Regular events:

**Tuesday:** Sensory Room, Ifield Life

**Wednesday:** music & gong sessions

**Thursday:** PE Enrichment, Hydrotherapy 9:15–10:30

**Friday:** Rainbow Room , PE in Sports Hall



### General Information

A very warm welcome to Wren Class! We are all very excited to work alongside parents and carers supporting our students this year. This term, students will be exploring what "Adults do all day".

Students will explore a range of jobs and the uniforms worn in different roles.

### Homework and Contact

Thank you for using the Home/School Journals - the comments we receive are always useful; please continue to let us know if we can help with any concerns or if there is anything interesting to tell us.

## Communication & Interactions

We will be personalising speech and language targets to facilitate early communication with a range of partners, This will take place through: The Curiosity Programme, Attention Autism, Tac Pac, Intensive interaction and visits to the Rainbow Room and Sensory Room.

## PSHE

Wren Class have begun to develop some wonderful relationships. In PSED our main focus this term is continuing to develop relationships, between adults and students and between the peers themselves. Daily there will be a variety of opportunities for turn taking activities. Students are encouraged to express preferences and choice through a Total Communication Approach.

## Preparing for Adulthood

The students will develop their life skills through Food Technology sessions, personal hygiene sessions and activities to encourage social interaction and turn taking. We will be visiting Ifield Life. This will provide a realistic and thoroughly enjoyable learning experience with a clear emphasis on developing Independence as part of the Ifield Life Programme.

## Topic

In our topic work this term, we are focussing on "what adults do all day". Students will be exploring different job types and a range of uniforms that adults wear in different jobs!

## Understanding the World

Students will have the opportunity to explore different occupations, i.e. small world tray, attend and respond to visitors from different backgrounds, and begin to identify same and different.



## Foundations for Literacy

Students will continue to develop their communication through Objects of Reference, PECS, Makaton, Communication boards and switches.

Students will continue to develop their fine motor, mark-making through a range of activities, including messy mark making, Dough Disco and sensory trays.

We will have story sessions daily including story sacks and sensory stories. Each student will share a story with an adult. Either 1:1 or in a small group.

Linked to this terms topic:  
Clothesline Clues to Jobs People Do,  
ABC What can I be?  
What do People Do All Day?

## Physical Education:

This term, the students are exploring movement through sensory play, games, and equipment-based challenges. We will explore movement, from rolling to climbing and sending and receiving; each step builds confidence, coordination, and spatial awareness in a fun, supportive way.

## PE Enrichment

Thursday morning Wren students will have the opportunity to have Hydro Therapy as part of PE Enrichment. We will be splitting into two groups for our sessions



## Expressive Arts and Design

This term, the students will have the opportunity to develop pretend play in role play and small world areas, use imagination to explore different materials in a variety of ways, collage using different materials and textured fabrics.

## Foundations for Maths

Students will be following a personalised maths plan. Each week we will be focusing on a different mathematical concept exploring size including comparing size and ordering size, patterns, days of the week and counting. There will be a variety of opportunities to explore these concepts as part of our learning time and our continuous provision.

## Music

Every week we have a music lesson and Gong Therapy session. Pupils will have the opportunity to explore a range of percussion instruments and musical elements. Pupils will encounter songs related to Harvest, growing and changing.

