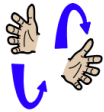
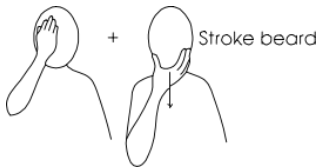


## Core signs for our topic this term.



Our topic this term is 'Walk the Plank', here are some related signs for you to practice

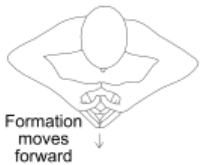
pirate



sea



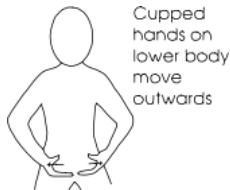
ship



gold



pants



Don't forget to say the words as you sign!



Beech Class  
Key stage 1  
Information  
for parents/  
carers  
Term 6  
2025

IfieldSchool



**Class Teacher and Teaching Assistants:**

Louisa Howarth (ITT)  
Liza Morris (TA)  
Libby Banks (TA)  
Amy Cole (TA)  
Kate Tucker (TA)  
Darja Kulebina TA



This term our focus will be:

## 'Walk the Plank'

**Key Texts:**

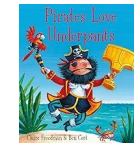
'Pirates love underpants' by Claire Freedman  
'Ten little pirates' by Mike Brownlow  
'That's not my pirate' by Fiona Watt

**Regular events:**

Swimming: Monday morning

PE Enrichment - Tuesday afternoon:

PE - Wednesday Morning



**General Information:**

We are looking forward to an exciting term, with lots of pirate fun! Beech Class will be enjoying lots of water activities, so please send in a spare set of clothes in case they get wet.

If you are enjoying any trips to the beach we would be grateful for shells and other items found at the beach to use in our learning.

If you have not already done so please send in a named bottle of sun-cream so we can reapply when needed and a suitable hat.



**Homework and contact:**

The Home/School Journals continue to be our principle means of communicating with you. Please check them each day. In addition messages can be emailed to the office for our attention.

We hope you are continuing to enjoy the photographs shared via Evidence for Learning weekly.

**Ideas for home:**

If you have any photos of your child enjoying topic related activities, please feel free to share them by emailing [office@ifield.kent.sch.uk](mailto:office@ifield.kent.sch.uk)

## Foundations for Literacy

This term, Beech Class will engage in a range of sensory stories and experiences based around Pirates. Beech Class will be dressing up and acting out songs and actions from the stories about pirates.

Key songs will be: 'When I was one (I climbed aboard a pirate ship), Over the deep blue sea and The Big ship sails on the ally ally oh'.

## Foundations for Maths

This term, Beech Class will continue to explore, order and match number value to 5 using topic related resources e.g. coins and treasure. Beech class will be exploring and following simple positional Language: on/under.

Beech class will match patterns using colour and shapes.

## Understanding the world

This term, Beech Class will be exploring floating and sinking during exploratory play. We will be using magnifying glasses or a visualiser to explore treasure/sea objects in more detail. Beech Class will find out about Sea creatures, naming and matching them.



## Fine Motor Skills

This term, Beech Class will be exploring a range of mark-making activities using large movements in the indoor and outdoor areas using a range of media. Beech class will be scooping and pouring different resources and finding treasures in different materials including playdough, goo, foam and sand.

## Expressive Arts & Design

This term, Beech Class will be finding patterns in the environment and making them using resources in sand, playdough etc. Beech Class will be using sand and other objects and materials found at the beach to make sand art.



## Fun With Foods

Foods can cause anxieties for our pupils with ASD.

Beech Class will continue to follow the Fun with Food programme to help to develop their tolerance of different smells and textures.

## Therapies

Beech Class will continue to access

- Therapeutic Music
- Brushing
- Compressions
- Sensory Circuits
- PECS and Makaton
- SLIC support
- OT support

As required following observations and assessments by our therapists.



## PSHE (Personal, social and health education) and RSE

This term, Beech Class will continue to be supported to develop their awareness and interactions with their peers in their class, including being encouraged to share and build with their friends. Beech Class will be continuing to develop their self-help skills when dressing and undressing.

## Physical Education:

This term Beech Class will be balancing on different equipment. Beech Class will be making and walking along different sensory walkways. Beech Class will be using balls and bean bags to throw towards different targets.



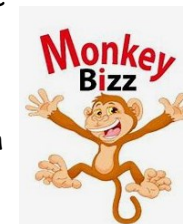
## Communication/Language

This term, pupils will continue to be supported using a total communication approach. Supportive activities will continue to include intensive interaction, Curiosity Programme, Attention Autism and personalised activities to support EHCP outcomes.



## PE Enrichment

This term for PE Enrichment on Tuesday afternoons we will be going to Monkey Bizz where we will be able to climb and explore the soft play equipment. Please ensure your child wears a top with long sleeves.



## Music

In Music this term, Beech Class will encounter sea shanties within music lessons this term, with the opportunity to create their own using switches. Pupils will explore tuned instruments and different pitches to continue develop their knowledge of musical elements.

