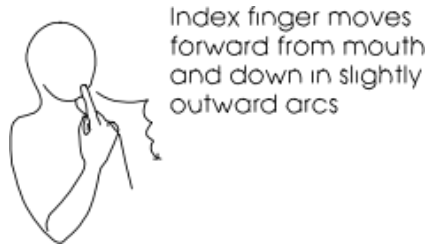


Core signs for our topic this term.



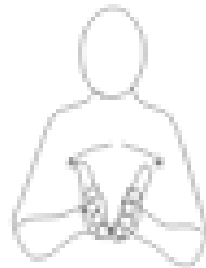
Our topic this term is 'Powerful Poems' here are some related signs for you to practice.

poem



Index finger moves forward from mouth and down in slightly outward arcs

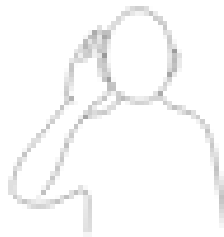
book



reading



listen



Don't forget to say the words as you sign!



Wren Class Information for parents

Term 4



Class Teacher and TAs
Victoria Butler (Teacher)
Shelley Giltrap (TA)
Katie Pearce (TA)
Sophie Aldous (TA)
Ellen Keys (TA)

Regular events:

Monday:
Tuesday: Sensory Room
Wednesday: AM Music PM Ifield Life
Thursday: PE Enrichment: Ice Skating
Friday: Rainbow Room / PE / Food Tech

Please ensure your child has appropriate named wet weather clothing and shoes.



General Information

We hope you and your families had a restful half term holiday! We would love to celebrate adventures your son / daughter had over the week.. Please could you send in some photographs of your child. If you would like to send this electronically, please email them to our school office. This term our topic is 'Powerful Poems'.

Homework and contact

Thank you for using the Home/School Journals, the comments we receive are really helpful. Please do continue to let us know if you have any concerns. Please read/ share a book with your child every night. Please ensure that your child has the appropriate named clothing for activities we are doing such as PE kit, wellies, coats and jumpers.

PSED

Our PSED learning this term will focus on Being Safe: Begins to follow instructions. Is able to identify safe/unsafe behaviour. Know who they can go to if they feel unsafe.

Expressive Arts and Design

This term we will be focusing on making requests of materials when engaging in a gluing activity e.g. by using a communication board. Reacts consistently to a variety of different sensory experiences when provided with familiar activities

Foundations for Literacy

Pupils will continue to develop their communication through Objects of Reference, PECS, Makaton, Colourful Semantics and communication boards.

Our learning time will include: Attention Autism and the Curiosity Programme. Pupils will continue to develop their fine motor, mark-making and handwriting skills through a range of activities, including Write Dance, Dough Disco and sensory trays. We will have story sessions daily including story sacks and sensory stories. Each student will share a story with an adult. Either 1:1 or in a small group.

Linked to this terms topic 'Powerful Poems' stories will include ; Zim, Zam, Zoom by James Carter. Ready for spaghetti by M Rosen

Foundations for Mathematics

Each week we will be focusing on a different mathematical concepts including: Counting, 1:1 correspondence, Beginning to match numerals. Colour and pattern recognition. Exploring 2D and 3D shape

Communication Interaction

We will continue to develop our personalised speech and language targets to facilitate early communication with a range of communication partners. The pupils will be supported to becoming more confident to initiate interactions with peers through a variety of turn taking games and play opportunities.

Food Tech

Each week the students will be taking part in cooking lessons. Food Tech lessons will take place on a Wednesday or Friday and will often be linked to our topic, .



Life Skills

The pupils will develop their life skills with the preparation of snack everyday, personal hygiene and activities to encourage social interaction and turn taking. We will continue developing independence as part of the Ifield Life Programme. Our life skills will focus on sorting e.g. pillow in the bedroom, fork in the drawer.

Understanding of the World

We will be focusing on identifying a single property of an object or animal e.g. soft or hard, by colour, by size.

We will be exploring curiosity in the world, focusing on the changes that take place over the spring season.

Music

Every week we will have Gong Therapy and a music lesson. Pupils will experience a range of sung and rap music throughout their music lessons. They will have the opportunity to create and make rhythms using a range of tuned and untuned instruments.

Physical Education

This term we will be practising bike skills for our PE lessons with a focus on developing gross motor skills alongside hand/eye coordination.

PE Enrichment

This term Wren Class will be visiting Gillingham Ice Rink. The students will have the opportunity to develop their confidence and skills with the support of class team and an Ice Skating instructor.