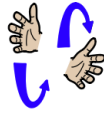


Core signs for our topic this term.



Our topic this term is 'Extra, Extra Read all about it', here are some related signs for you to practice.

family



Aunt



Grandfather



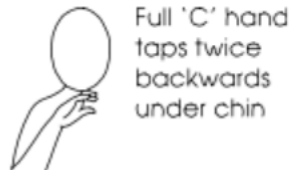
Uncle



Grandmother



Cousin



Don't forget to say the words as you sign!



Owl Class Information Booklet

Term 2
Nov/Dec
2024



Class Teacher and TAs

Richard Skirving (Class Teacher)
Fiona Turley (TALL)
Paige Dayton (TA)
Amber Stillings (TA)
David Drynan (TA)
Chloe Bond (MDS)

Experiences/visits/visitors

March 8th: World Book Day
March 10th: Year 10 Careers Week
April 4th: Easter Egg Hunt

Regular events:

Monday: PE
Wednesday: Forest School
Thursday: Larkin \farm

Please ensure your child has appropriate named wet weather clothing and shoes.



General Information

We hope you and your families had a restful half term holiday! We would love to celebrate adventures your son / daughter had over the week.. Please could you send in some photographs of your child. If you would like to send this electronically, please email them to our school office. This term our topic is 'Extra, Extra Read all about it'

Homework and Contact

Thank you for using the Home/School Journals - the comments we receive are always useful; please continue to let us know if we can help with any concerns or if there is anything interesting to tell us.

Interventions

Intensive interaction, sensory circuit and sensory stories are interventions which meet students sensory needs and develop communication and interaction skills.



Digital Skills

Students will learn to stop an action when told and show care and concern for their self.



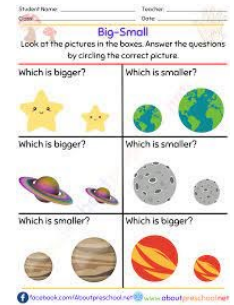
Communication

Students will use preferred communication methods to support their requests for items.



Foundations for Maths

Owl class will be Counting, 1:1 correspondence, matches colours, places correct shapes in a shape sorter



EAD

Students will experience a range of sung and rap music throughout their music lessons. They will have the opportunity to create and make rhythms using a range of tuned and untuned instruments.



Foundations for Literacy



Students will continue to develop their communication and literacy skills.

Students will listens to non-fiction information that contains pictures and text

Employability

Students will follows their task list using symbols/words with prompts e.g. daily timetable



Physical Education:

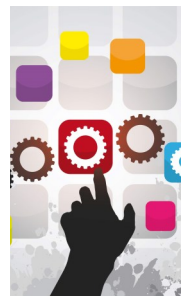
This term we will be practising bike skills for our PE lessons with a focus on developing gross motor skills alongside hand/eye coordination.



Preparation for Adulthood

Owl class will focus on preparing meals, snacks and drinks:

Following a recipe



PE Enrichment

Students will take part in various activities throughout the school year. This term students are attending Larkin Farm.

