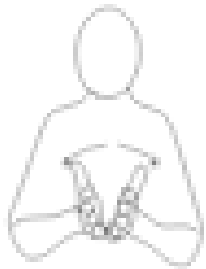


Core signs for our topic this term.



Our topic this term is 'Powerful Poems' here are some related signs for you to practice.

Book



listen



Poem



Reading



Don't forget to say the words as you sign!



Kingfisher Class Information for parents

Term 4



Class Teacher and TAs
Teresa Assado (Teacher)
Anu Singh (TALL)
Tallia Kingston (TA)
Shelley Deadman (TA)
Susan Nabwire (TA)
Andrea Bean (MDS)

Regular events:

Monday: Sensory Room

Tuesday: Ifield Life

Wednesday: Gong Therapy / Singing
Assembly/ Rainbow room and
Soundabout

Thursday: PE Enrichment: Meapa Gym

Friday: PE



General Information

We hope you and your families had a restful half term holiday! We would love to celebrate the adventures of your son / daughter over the half term break. Please could you send in some photographs of your child. If you would like to send this electronically, please email them to our school office. This term our topic is 'Powerful Poems'.

Homework and contact

Thank you for using the Home/School Journals, the comments we receive are really helpful. Please do continue to let us know if you have any concerns. Please read/ share a book with your child every night. Please ensure that your child has the appropriate named clothing for activities we are doing such as PE kit, wellies, coats and jumpers.

PSED

Our PSED learning this term will focus on Being Safe. This will support students to Learn how to follow instructions, identify safe/unsafe behaviours and knowing who they can go to if they feel unsafe.

Expressive Arts and Design

This term we will be focusing on making requests of materials when engaging in a gluing activity e.g. by using a communication board. Reacts consistently to a variety of different sensory experiences when provided with familiar activities.

Communication Interaction

Intensive Interaction is integrated throughout our day. It supports our pupils to enhance their social communication through developing the fundamentals of communication. There will be a personalised focus on Speech and Language targets to facilitate early communication with a range of communication partners, including Curiosity Programme, Attention Autism, EHCP targets and 1:1 interventions.

Food Technology

Each week the students will be taking part in cooking lessons. Food Technology lessons will take place on a Tuesday and will often be linked to our topic, such as kitchen equipment being used during cooking sessions.



Foundations for Literacy

Pupils will continue to develop their communication through Objects of Reference, PECS, Makaton, Colourful Semantics and communication boards. Our learning time will include: Attention Autism and the Curiosity Programme. Pupils will continue to develop their fine motor, mark-making and handwriting skills through a range of activities, including Write Dance, Dough Disco and sensory trays. We will have story sessions daily including story sacks and sensory stories. Each student will share a story with an adult. Either 1:1 or in a small group.

Linked to this terms topic 'Powerful Poems' stories will include ; Zim, Zam, Zoom by James Carter
Ready for spaghetti by M Rosen

Foundations for Mathematics

Each week we will be focusing on a different mathematical concepts including: Counting, 1:1 correspondence, Beginning to match numerals. Colour and pattern recognition. Exploring 2D and 3D shape

Life Skills

The pupils will develop their life skills with the preparation of snack everyday, personal hygiene and activities to encourage social interaction and turn taking. We will be visiting Ifield Life. This will provide a realistic and thoroughly enjoyable learning experience with a clear emphasis on developing independence as part of the Ifield Life Programme .

Preparation for Adulthood

We will be learning how to Preparing meals, snacks and drinks, during snack time and food tech lessons.



Music

Every week we have a music lesson and Gong Therapy session. Pupils will experience a range of sung and rap music throughout their music lessons. They will have the opportunity to create and make rhythms using a range of tuned and untuned instruments.



Physical Education

This term we will be practising bike skills on our PE lessons with a focus on developing gross motor skills alongside hand/eye coordination.



PE Enrichment

This term Kingfisher Class will be going to Meapa Gym. The students will have the opportunity to expand their gross motor skills, using a variety of apparatus with the support of class team and a gymnastic instructor. The Meapa Gym lessons will happen on a Wednesday morning.