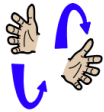


Core signs for our topic this term.



Our topic this term is 'Bedtime Stories', here are some related signs for you to practice

big



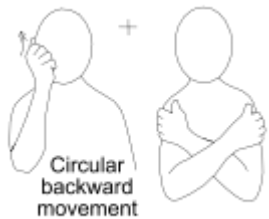
small



dog



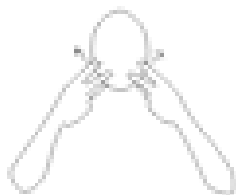
bear



mouse



cat



Don't forget to say the words as you sign!

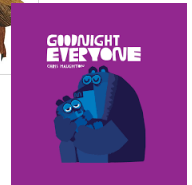
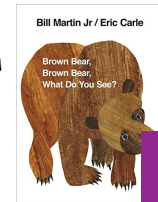


Beech Class
Key stage 1
Information
for parents/
carers
Term 4
2025

IfieldSchool

Class Teachers and Teaching Assistants:

Jean Duncan
Louisa Howarth
Darja Kulebina
Kate Tucker
Amy Cole
Libby Banks
Liza Morris



This term our focus will be:

'Bedtime Stories'

Key Texts:

Brown Bear, Brown Bear
What do you hear?
by Bill Martin

Goodnight Everyone
by Chris Haughton

Regular events:

Swimming- Monday Afternoon

PE Enrichment - Tuesday afternoon:
Gross Motor Skills - Parachutes,
Scooting and Cycling.

PE - Wednesday Morning

General Information:

This term we are looking forward to the arrival of Spring. We will be supporting the children to look closely for signs of Spring outside, as well as hopefully enjoying some milder weather. Please make sure your child has wellies and waterproofs in school to combat any April showers.



As we move towards Easter, we will learn more about ducklings, lambs and rabbits, as featured in our key texts.

Homework and contact:

The Home/School Journals continue to be our principle means of communicating with you. Please check them each day. In addition messages can be emailed to the office for our attention.

Last term we introduced the Evidence for Learning weekly photographs, we hope you are enjoying seeing a glimpse of what your child is engaging with at school each week.

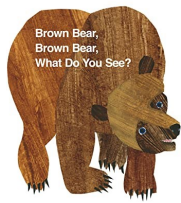
Ideas for home:

If you have any photos of your child enjoying topic related activities, please feel free to share them by emailing office@ifield.kent.sch.uk

Foundations for Literacy

This term, Beech Class will engage in a range of sensory experiences in learning to recognise and match the various coloured animals in the story.

Bill Martin Jr / Eric Carle



They will also explore using mark making techniques to record what they see during their Spring investigations.

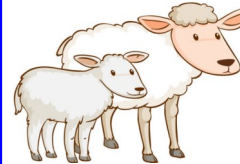
Foundations for Maths



This term, Beech Class will practise their colour sorting and matching skills. They will begin to sort items according to size, comparing similar and different animals. In addition, they will sequence animals into the order they appear in the books they read, developing their sense of time.

Understanding the world

This term, Beech Class will be looking for signs of spring. They will explore bulbs poking through the soil and leaves in bud. Later in the term, they will move on to exploring spring animals and their babies as they prepare to celebrate Easter.



They will explore bulbs poking through the soil and leaves in bud. Later in the term, they will move on to exploring spring animals and their babies as they prepare to celebrate Easter.

Fine Motor Skills

This term Beech Class will be practising their pincer grips through ripping paper. They will also be supported to use the scissor block to cut coloured paper and card. If you have any catalogues or magazines for us to cut up, we'd really appreciate them.



Expressive Arts & Design

This term, Beech Class will be exploring ripping, cutting and sticking coloured paper to make small and large scale collages,



inspired by the illustrations of Eric Carle. They will also explore colour mixing with water, paint and through sensory experiences.

Fun With Foods

Foods can cause anxieties for our pupils with ASD.



Beech Class will continue to follow the Fun with Food programme to help to develop their tolerance of different smells and textures. This term they will be introduced to wet foods.

Therapies

Beech Class will continue to access

- Therapeutic Music
- Brushing
- Compressions
- Sensory Circuits
- PECS and Makaton
- SLIC support
- OT support

As required following observations and assessments by our therapists.



PSHE (Personal, social and health education) and RSE

This term, Beech Class will continue to be supported to develop their awareness and interactions with the peers in their class.

We have kind hands.



Our Nursery rhyme focus will be based on 'Finger rhymes' in line with our teaching about Kind Hands.

Physical Education:

This term Beech Class will be developing their bouncing skills using their whole bodies on gym balls and mini trampolines, to bouncing small and large balls using their hands.



In swimming they will continue to develop their water confidence skills.

Communication/Language

This term, the children's personal Speech and Language targets will be reviewed and updated to reflect their progress with their communication skills.



These will be shared at Parents' Evening. Supportive activities will continue to include intensive interaction, Curiosity Programme, Attention Autism and personalised activities to support EHCP outcomes.

PE Enrichment

This term Beech Class will be practising their Gross Motor skills with Louisa. They will explore parachute games in the hall and cycling and scooting out on the playground.



Music

In Music this term, Beech Class will encounter songs linked to traditional stories and tales.

They will continue to explore sounds of percussion and tuned instruments to develop their knowledge of how instruments work.

