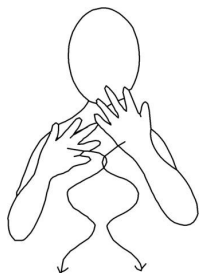


## Core signs for our topic this term.



Our topic this term is 'Frozen', here are some related signs for you to practice.

snow



cold

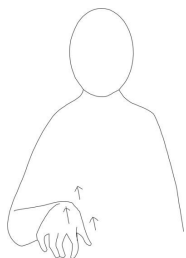


For a  
make  
to n

rain



ice



frozen



Draw clawed  
hands sharply  
back

Don't forget to say the words as you sign!



Cherry  
Class

Key stage 2  
Information  
for parents/  
carers  
Term 2  
2024

lfieldSchool

### Class Teacher and Teaching Assistants:

Laura Botelho (Teacher)  
Tracey Skinner (TA)  
Ocean Chapman (TA)  
Mark Bridle (TA)  
Michelle Steadman (TA)  
Helen Jackson (TA)

### Experiences/visits/visitors:

As part of this topic we will be experiencing a frozen/ice themed trip -to be confirmed.



### Regular events:

PE Enrichment this term is Larkin Farm and will be every Wednesday afternoon from 20.11.24- 5.2.25.

Swimming will take place every Friday morning. Please make sure pupils bring in their swim kits for this day and label everything.

PE will be every Tuesday morning please ensure your child has suitable footwear and warm clothes to do PE outside.

Frozen

### General Information:

We hope that your child enjoyed their first term and have a lovely break. We are looking forward to completing lots of activities linked to our new topic which is 'Frozen' in term 2.

### Homework and contact:

Please share books with your child every day.


Please support our use of PECs and/or communication boards or AAC's by practicing at home as often as possible.

The Home/School Journals are in place for us both to write in so we can keep each other up to date about your children.

If you have any questions please contact the school office or speak to one of the team when dropping off or picking up.

### Ideas for home:

- Make some fake snow with 2 1/2 cup baking soda and 1/2 cup white conditioner and mix.
- Make a snowflake and practise cutting skills by folding white paper and making cuts, then unfold to see the pattern.
- Freeze a motivating toy/object in ice and try to 'set it free' with warm water or hammers

<p><b>Foundations for Literacy</b></p> <p>This term we will be exploring Sensory stories linked to our topic 'frozen.' We will be able to recognise familiar objects with symbols and can choose a book by saying or signing a repetitive word or phrase that is contained within. We will also learn how to put marks or symbols alongside pictures to recognise that all marks convey a meaning.</p>	<p><b>Foundations for Maths:</b></p> <p>This term we will be focusing on finding which box will hold a specific shaped or sized object. We will be counting cubes into a containers and comparing which container holds more and less. We will be ordering two items by capacity and pretending to buy items valued up to 10p using 1p coins and make 10 pence using ten 1p coins.</p>	<p><b>Understanding the world</b></p> <p>We will be exploring using our senses and reacting to strong smells/ changes in temperature/changes in volume.</p> <p>We will continue to encourage the pupils to engage in self chosen exploration of the environment and learn about the world around us along the way.</p>	<p><b>Motor Skills</b></p> <p>We will be developing our motor skills so we can transfer from one hand to another using a palmar grasp when engaging in exploration. Hold large objects in two hands (using a palmer grasp) during periods of play or when working with a familiar adult.</p> <p>We will continue our independent physical development, working on our individual next steps, fine motor and MOVE targets.</p>
<p><b>Art/Design</b></p> <p>This term we will be working on exploring our hands being guided through a range of textures, including wet paint. We will engage in tactile activities by keeping our hands on or in a substance when supported by a familiar adult. We will monitor how pupils react when being offered a variety of tactile experiences.</p>	<p><b>Fun With Foods</b></p> <p>In Cherry Class we will explore how edible substances can be fun. This is aimed at supporting those pupils who find food/eating an anxiety inducing experience. We will link food to our topic and have lots of fun along the way as we play, touch, smell, smear, cut, roll and use our whole bodies to explore food.</p>	<p><b>Therapies</b></p> <p>Cherry Class will be accessing</p> <ul style="list-style-type: none"> <li>• Therapeutic Music</li> <li>• Brushing</li> <li>• Compressions</li> <li>• Sensory Circuits</li> <li>• SLIC support</li> <li>• OT support</li> <li>• Swing room</li> </ul> <p>As required following observations and Assessments by our therapists</p>	<p><b>PSHE (Personal, social and health education) and RSE</b></p> <p>This term we will focus on what is safe/not safe to eat or put in mouth. We will ne making choices at snack time using our preferred method of communication and will focus on how we feel when our hands are touched.</p>
<p><b>Physical Education:</b></p> <p>PE will be on Tuesday mornings this term and we will be focussing on rolling a ball to a target e.g. familiar adult.</p> <p>Swimming will be on Fridays mornings in the school pool.</p>	<p><b>Communication/Language</b></p> <p>Personalised Speech and Language targets will be created to enable early communication. These include initiation, nursery rhymes, Curiosity Programme, Attention Autism (Explore only), EHCP targets, 1-1 interventions, and Intensive Interaction.</p>	<p><b>PE Enrichment</b></p> <p>The pupils will have PE Enrichment on Wednesday Mornings. This term it will be MEAPA Gym</p> 	<p><b>Music</b></p> <p>Pupils will be working towards their Christmas performance through personalised musical targets. This will include the use of tuned, untuned percussion and movement to music using material.</p>