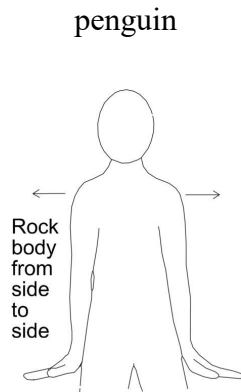


## Core signs for our topic this term.



Our topic this term is 'Arctic Animals', here are some related signs for you to practice.



Don't forget to say the words as you sign!



## Owl Class Information Booklet

Term 2  
Nov/Dec  
2024

**lfieldSchool** **Class Teacher and TAs**

### TAs

Richard Skirving (Class Teacher)  
Fiona Turley (TALL)  
Paige Dayton (TA)  
Amber Stillings (TA)  
David Drynan (TA)  
Chloe Bond (MDS)



### Experiences/visits/visitors

Ice skating Open Morning—14 November  
Children in Need—15 November  
Whole School Photos - 20 November  
Parents evening—26 November  
Christmas Market—13 December  
Christmas Performance—18 December

### Regular events:

Monday: PE  
Wednesday: MEAPA Gym from 21 November

### General Information

Term1 has flown by with all students in Owl class settling well into the routines of their new class. Friendships are developing nicely. Term 2 is going to be very busy. The topic for the term is Arctic Animals. Christmas will also feature as part of the term.

### Homework and Contact

Thank you for using the Home/School Journals - the comments we receive are always useful; please continue to let us know if we can help with any concerns or if there is anything interesting to tell us.

## Interventions

Tacpac , Intensive interaction, sensory circuit and sensory stories are daily interventions which meet students sensory needs and develop communication and interaction skills.



## Digital Skills

Students will learn to draw or moves shapes using an art application with some support.



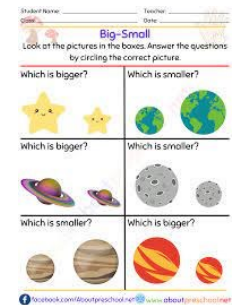
## Attention Autism/ Communication

Students will continue to take part in daily Attention Autism sessions to expand on attention and engagement. Students will use communication boards to support their requests for items.



## Foundations for Maths

Owl class will be describing temperature in terms of hot and cold. They will be also using counting and 1:1 correspondence.



## EAD

Students will explore different materials in a variety of ways, They will create a collage using different materials and textured fabrics e.g. making mountains out of paper mâché and mad rock.



## Foundations for Literacy



Students will continue to develop their communication and literacy skills. Students will listen to non-fiction information that contain pictures and text Students will also join in discussion when sharing books and texts.

## Employability

Students will continue to develop their pre-employability skills through responding to verbal, physical and pictorial instructions with encouragement from adults.



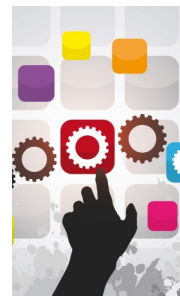
## Physical Education:

This term we are focusing on various ball skills from catching, throwing, kicking, passing and hitting.



## Preparation for Adulthood

Owl class will focus on the difference between friendship and being in a relationship. Identifying different relationships such as: friends, family and adults that help (school staff).



## PE Enrichment

Students will take part in various activities throughout the school year. This term students are taking part in ice skating!

