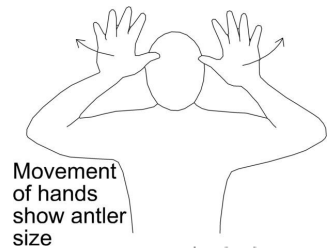


Core signs for our topic this term.



Our topic this term is 'Winter Wonderland', here are some related signs for you to practice.

Reindeer

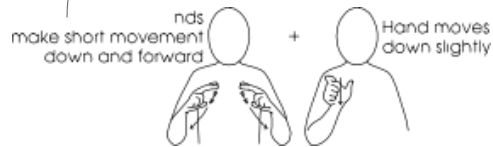


Movement of hands show antler size

Winter



Explorer



Hands make short movement down and forward

Hand moves down slightly

Snow



Christmas



Slide right hand over back of left hand towards body, then close right hand and place on back of left hand

Don't forget to say the words as you sign!



Woodpecker Class

Information for parents

Term 2

IfieldSchool

Class Teacher and TAs

Pamela Donoghue-Freeburn (Class teacher)
Nicola Elsahar (TALL)
Katherine Rogers
Hannah Morris
Laura Hillier



Regular events:

Monday: PE
Tuesday: Music
Thursday: PE Enrichment
Friday: Art/DT/Food Technology

General Information

Thank you for your support in sending your child in with a PE kit. Please continue to ensure that it is available for Mondays as we help them develop their independence to get changed and learn to keep all their belongings together. Please make sure that all clothes and shoes are labelled.

Curriculum information

This term our topic is 'Winter Wonderland'. We will be reading a range of texts exploring countries with colder climates and in food technology we will be staying with a chilly theme through creating sorbets and frozen yoghurts!

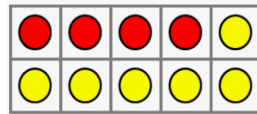
English:



All of our texts this term link to our topic, we will be reading a book called 'The Great Explorer' and What can I see in Winter? Through these texts, and others, we will be retelling stories, writing a newspaper article and creating a travel guide to Lapland. The skills we will be developing include punctuation, and adding adjectives to make our writing more interesting.

Maths:

In Maths, students will be continuing to develop their understanding of place value before moving on to addition and subtraction. We will be using a variety of concrete resources throughout the term to help embed the pupils understanding.



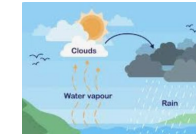
Art:

In Art we will be creating calendars and seasonal gifts along with designing and making Christmas decorations from natural materials.



Science:

We will be learning about states of matter and are looking forward to developing our understanding of this through experiments and investigations.



We will also be exploring and learning about the water cycle as well.

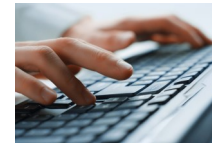
Food Technology:

In Food Technology we will be creating ice lollies, sorbets and frozen yoghurt bark.



Computing:

This term during our weekly computing sessions we will be developing our word processing skills; including how to type, save and edit our work.



PSHE (Personal, social and health education):

This term we will continue to learn about family values and how to maintain healthy relationships as well as ways to keep ourselves safe in unfamiliar places and situations.

Physical Education:

In PE pupils will be improving their technique and performance in Gymnastics through self-analysis and working in pairs.



Religious Education:

In RE the pupils will be learning about Islam and what it means to be a Muslim.



Geography

This term we will be learning about the seasons and weather conditions including the Northern Lights.



Music

Pupils will be working towards their Christmas performance through personalised musical targets. This will include the use of tuned instruments, singing, and signing.

