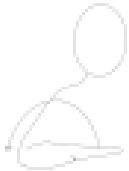


Core signs for our topic this term.



Our topic this term is 'A Walk in the Countryside', here are some related signs for you to practice.

Hill



Farmer



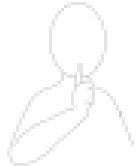
Grass



Animal



Quiet



Field



flower



green



Don't forget to say the words as you sign!



Oak
Class
Key stage 2
Information
for parents/
carers
Term 1

IfieldSchool

Class Teacher and Teaching Assistants:
Natasha Grover (Teacher)
Ebony Jones (TALL)
Nicky Wallington (TA)
Michelle Reynolds (TA)
Nyla Tall (TA)
Jeni Lwin (TA)

Experiences/visits/visitors:

As part of this exciting topic we will be taking in a walk through one of our local parks.



Regular events:

PE Enrichment this term is Larkin Farm. This will be every Wednesday afternoon. Please ensure your child is dressed appropriately for the weather and uniform is labelled.

Swimming will take place every Friday morning. Please make sure pupils bring in their swim kits and swim pads for this day and label everything.

PE will be every Monday morning.

A Walk in the Countryside

General Information:


Welcome back! We hope you had a lovely summer. We are looking forward to completing lots of activities linked to our new topic which is 'A Walk in the Countryside.'

Homework and contact:

Please share books with your child every day.
Please support our use of PECs by practicing at home as often as possible.
The Home/School Journals are in place for us both to write in so we can keep each other up to date about your children.
If you have any questions please contact the school office or speak to one of the team when dropping off or picking up.

Ideas for home:

- Take a drive out to see what our local countryside looks like and use key vocabulary/Makaton to embed these words.
- Take a walk in a local country park such as Shorne or Jeskyns.
- Visit Gravesend town and talk about how it is different to the countryside

<p>Foundations for Literacy</p> <p>This term we will be exploring Sensory stories linked to our topic 'A Walk in the Countryside.' We will explore the sounds and sights of the natural world around us.</p> <p>We will explore mark making with a range of natural tools and resources.</p>	<p>Foundations for Maths:</p> <p>This term we will be focusing on the passing of time and how that relates to ourselves. We will explore night and day and our daily routines as we settled into a new class with new timetables and routines to get used to.</p> <p>We will explore height and length too looking at tall trees and long branches.</p>	<p>Understanding the world</p> <p>We will be exploring natural objects linked to our topic through sound, sight and touch.</p> <p>We will continue to encourage the pupils to engage in self chosen exploration of the environment and learn about the world around us along the way.</p>	<p>Motor Skills</p> <p>We will be developing our hand eye coordination by picking up and manipulating small natural objects learning that these are not safe to put in our mouths.</p> <p>We will be developing our stamina when going on longer walks and managing uneven surfaces such as grassy hills and muddy puddles.</p>
<p>Art/Design</p> <p>The term we will be exploring our creativity on a large scale using different body parts and tools using some natural resources such as mud.</p>	<p>Fun With Foods</p> <p>In Oak Class we will explore how edible substances can be fun. This is aimed at supporting those pupils who find food/eating an anxiety inducing experience. We will link food to our topic and have lots of fun along the way as we play, touch, smell, smear, cut, roll and use our whole bodies to explore food.</p>	<p>Therapies</p> <p>Oak Class will be accessing</p> <ul style="list-style-type: none"> • Cleverfingers • Gong Therapy • Therapeutic Music • Brushing • Compressions • Sensory Circuits • SLIC support • OT support • Swing room <p>As required following observations and Assessments by our therapists.</p>	<p>PSHE (Personal, social and health education) and RSE</p> <p>This term we will play lots of social games in small groups, developing shared attention and turn taking.</p> <p>We will embed the new lunchtime and snack time routines that may be different to those last year.</p>
<p>Physical Education:</p> <p>PE will be on Monday mornings this term. Many of these sessions will take place outside so please ensure your child has weather appropriate clothing to join in.</p> <p>Swimming will be on Fridays mornings in the school pool.</p>	<p>Communication/Language</p> <p>Personalised Speech and Language targets will be created to enable early communication. These include initiation, nursery rhymes, Curiosity Programme, Attention Autism (Explore only), EHCP targets, 1-1 interventions, and Intensive Interaction.</p>	<p>PE Enrichment</p> <p>The pupils will have PE Enrichment on Wednesday afternoons. This term it will be Larkin Farm.</p> 	<p>Music</p> <p>Pupils will be exploring Caribbean percussion instruments and developing their own musical targets within the topic. Pupils will also participate in Makaton singing and signing within all aspects of their curriculum this term.</p>