

Core signs for our topic this term.



Our topic this term is 'Minibeasts', here are some related signs for you to practice.

Dragonfly



Ladybird



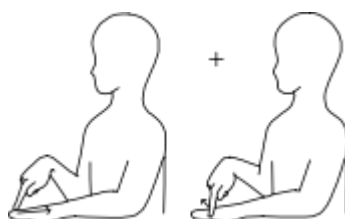
Beetle



Bee



Easter



Don't forget to say the words as you sign!



IfieldSchool

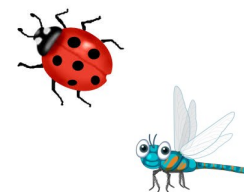
Ash Class
Key stage 1
Information
for parents
Term 4
2024

Class Teacher and Teaching Assistants:
Jayne Field (Teacher)
Anna Vitalis (Teacher Wednesday am)
Jennifer Cook (TA)
Lorna Cutler (TA)
Cara Broad (TA)



This term our focus will be:

'Minibeast'



Regular events:

PE Enrichment will be each Tuesday afternoon.
Swimming will take place each Wednesday. Please make sure pupils bring in their swim kits for both these days.
PE will take place each Friday afternoon. Please make sure pupils bring in their PE kits for this day.

General Information:

We are looking forward to completing lots of activities linked to our new topic which is 'Minibeasts'. We will be learning about different insects and their habitats, including bees, beetles and ladybirds.

Homework and contact:

Please share books with your child every day.
Please support our use of PECS by practicing at home as often as possible.
The Home/School Journals are in place for us both to write in so we can keep each other up to date about your children.
If you have any questions please contact the school office or speak to one of the team when dropping off or picking up.

Ideas for home:

Please continue to share the fun you have at home and the toys and games your children like play with. We love to see and hear about the things the children have been doing at home!

Foundations for Literacy

During our Literacy focus we will share sensory stories.

We will also be looking at non-fiction books and texts and will be answering questions about the minibeasts and labelling the insects and habitats they find.



Foundations for Maths:

During our Maths focus sessions we will be counting and using numbers throughout our topic of minibeast. We will be focusing on 1:1 correspondence and counting and using numbers, making sets of numbers and adding 1 more. We will be using our number knowledge to play simple dice games.

Understanding the world

This Term we will be learning about different minibeasts and their habitats. We will be finding out the differences and similarities between them and sorting minibeast to their correct habitat. We will be developing our vocabulary to describe habitats and different types of minibeast.



Fine Motor Skills

Ash Class will have lots of opportunities to develop their fine motor skills.

We will be using different tools to manipulate play dough. Ash Class will also using tools to look for and collect minibeasts in the immediate environment.

Art/Design

This term we will be exploring patterns and shapes as part of the minibeasts topic.

Ash Class will be using natural materials to make different minibeast. We will be making collages and stone bugs. We will be making our own bug hotels, minibeasts and habitats



Fun With Foods

Foods can cause anxieties for our pupils with ASD. Ash Class will be following the 'Fun with Food' programme to help develop your child's tolerance of different smells and textures.

This Term we will be continuing to explore different foods.

Therapies

Ash Class will be accessing

- Cleverfingers
- Write from the start
- Gong Therapy
- Therapeutic Music
- Brushing
- Compressions
- Sensory Circuits
- SLIC support
- OT support

As required following observations and Assessments by our therapists

PSHE (Personal, social and health education) and RSE

Ash Class will continue to be learning about right and wrong and making the right choices. We will be learning about dangers in the environment and also how to care for the environment.

Physical Education:

PE will be on a Friday and this term we are going to be exploring how different minibeasts move using the apparatus in the sports hall.

Swimming will be on a Wednesday and we are continuing to develop our confidence when in the water.

Communication/Language

Personalised Speech and Language targets will be created to enable early communication. These include initiation, nursery rhymes, Curiosity Programme, Attention Autism (Explore only), EHCP targets, 1-1 interventions, and Intensive Interaction.

PE Enrichment

Pupils will have PE Enrichment on Tuesday afternoons.

This term Ash Class will be swimming and this will involve learning how to be safe and developing confidence in the water.

Music

Some of Ash class will be experiencing 'Gong Therapy' during our music session this term. This aims to aid regulation and wellbeing.

Ash Class will be enjoying music session where we will be learning to respond to music and follow simple instructions. We will explore lots of different instruments and the sounds they make.