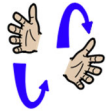


## Core signs for our topic this term.



Our topic this term is 'Seasons', here are some related signs for you to practice.

winter



spring



summer



autumn

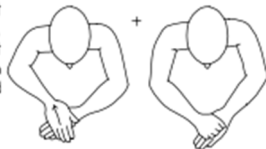


celebration



Christmas

Slide right hand over back of left hand towards body, then close right hand and place on back of left hand



Don't forget to say the words as you sign!



## Cherry Class Key stage 2 Information for parents Term 2 2023

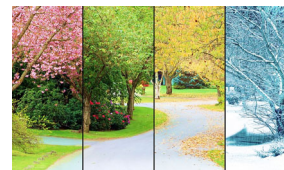


### Class Teacher and Teaching Assistants:

Laura Botelho(Teacher)  
Kate Jarvis (ITT Trainee Teacher)  
Rachel Johnson(TALL)  
Tracey Skinner(TA)  
Sian Hatcher(TA)  
Ian Hallett (TA)

### Experiences/visits/visitors:

A Christmas Grotto in the Ifield woods



## Seasons

### Regular events:

PE Enrichment every Tuesday afternoon will be Larkin Farm.

We will be doing Forest School every Tuesday Morning. Please ensure that your child has full waterproofs and appropriate clothing for cold weather.

PE will be every Thursday morning.

Swimming will take place every Friday morning (Please make sure pupils bring in their swim kits for this day).

### General Information:

Welcome back! We hope you enjoyed the half term. We are looking forward to lots of activities linked to our new topic 'seasons'.

### Homework and contact:


Please share books with your child every day. Please support our use of PECs by practicing at home as often as possible.

The Home/School Journals are in place for us both to write in so we can keep each other up to date about your children.

If you have any questions please contact the school office or speak to one of the team when dropping off or picking up.

### Ideas for home:

- Listen to the seasons song: [Seasons Song for Kids \(Autumn Version\) | Pancake Manor - YouTube](#)
- When getting dressed explain why we now put on coats/hats/scarves and welly boots for rain or snow
- Use seasonal, natural materials to make some art e.g. autumn leaves, a snow man or snow angel

<p><b>Foundations for Literacy</b></p> <p>During our Literacy focus sessions we will listen to lots of appropriate stories about snow and celebrations throughout the months of October, November and December. We will share sensory stories too. We will explore lots of mark making in many different forms. We will enjoy familiar songs and rhymes as well as learning some traditional celebration songs. We use lots of visuals to help us communicate.</p>	<p><b>Foundations for Maths:</b></p> <p>During our Maths focus sessions we will be exploring Maths concepts including number, shape, size and sequencing. We will do this through a range of themed activities and continuous provision. Children will be able to compare the size of pumpkins, presents and look at the length of fireworks from their artwork.</p>	<p><b>Understanding the world</b></p> <p>This term we will be exploring our understanding of the seasons especially Autumn and Winter and gaining an understanding of the celebrations that take place in those months including: Halloween, Diwali and Christmas.</p>	<p><b>Fine Motor Skills</b></p> <p>Cherry Class will have lots of opportunities this term to develop our fine motor skills using a range of resources including tweezers, scissors and activities that will require children to practice the skills of squeezing and releasing using fingertips. We will be continuing to develop our pencil control and use of different writing tools.</p>
<p><b>Art/Design</b></p> <p>We will be exploring art through using natural materials for example, leaf rubbings and using twigs to mark make. We will be celebrating bonfire night by drawing fireworks with a range of materials inside with chalk both on paper and outside on the ground.</p>	<p><b>Fun With Foods</b></p> <p>Foods can cause anxieties for pupil with ASD. Cherry Class will be following the Fun with foods programme to help develop your child's tolerance of different smells and textures.</p> <p>This term we will be continuing to work on moist food materials</p>	<p><b>Therapies</b></p> <p>Oak Class will be accessing</p> <ul style="list-style-type: none"> <li>• Cleverfingers</li> <li>• Fun before food</li> <li>• Gong Therapy</li> <li>• Therapeutic Music</li> <li>• Brushing</li> <li>• Compressions</li> <li>• Sensory Circuits</li> <li>• SLIC support</li> <li>• OT support</li> </ul> <p>As required Following observations and Assessments by our therapists</p>	<p><b>PSHE (Personal, social and health education) and RSE</b></p> <p>Cherry Class will be learning about regulation: make choices about where they want to go or what activities they want to access indoor and outdoor. They will be developing their independence when finding their own coat/bag and hanging them up on pegs.</p>
<p><b>Physical Education:</b></p> <p>PE will be on Thursday mornings this term. Many of these sessions will take place outside so please ensure your child has weather appropriate clothing to join in including coats and hats.</p> <p>Swimming will be on Fridays. Our focus will be water confidence, developing independence in the pool and floating safely on our backs.</p>	<p><b>Communication/Language</b></p> <p>Personalised Speech and Language targets will be created to enable early communication. These include initiation, nursery rhymes, Curiosity Programme, Attention Autism (Explore only), EHCP targets, 1-1 interventions, and Intensive Interaction. Many of Cherry class are learning how to use electronic talkers to communicate their needs and make comments on the world around them.</p>	<p><b>PE Enrichment</b></p> <p>The pupils will have PE Enrichment on Tuesday afternoons. This term it will be woodland walk.</p> 	<p><b>Music</b></p> <p>Pupils will be developing their performance skills within a sensory context to create a Christmas performance. They will continue to receive gong therapy for the term.</p>