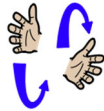


Core signs for our topic this term.



Our topic this term is 'Seasons', here are some related signs for you to practice.

light

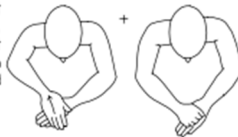


dark



Christmas

Slide right hand over back of left hand towards body, then close right hand and place on back of left hand



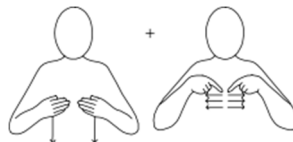
story



owl



skeleton



Don't forget to say the words as you sign!



Ash Class Key stage 1 Information for parents Term 2 2023

This term our focus will be on;

'Special Stories'



Class Teacher and Teaching Assistants:

Jayne Field (Teacher)
Anna Vitalis (Teacher Wednesday am)
Jennifer Cook (TA)
Lorna Cutler (TA)
Cara Broad (TA)
Dean Bowrage (TA)

Experiences/visits/visitors:

This Term Ash Class will be going to MEAPA on a Wednesday. Children will have opportunities use the gym equipment, sunken trampoline whilst developing their confidence and physical skills.

Regular events:

PE Enrichment each Tuesday afternoon will be Trampolining.
Swimming will take place each Thursday (Please make sure pupils bring in their swim kits for this day).

General Information:

Welcome back! We hope you had a lovely half-term break. We are looking forward to completing lots of activities linked to our new topic which is 'Special Stories', sharing the stories of 'Funny Bones', 'Owl Babies' and Elmers Christmas.

Homework and contact:

Please share books with your child every day.
Please support our use of PECs by practicing at home as often as possible.
The Home/School Journals are in place for us both to write in so we can keep each other up to date about your children.
If you have any questions please contact the school office or speak to one of the team when dropping off or picking up.

Ideas for home:

Key signs for our topic this term:


Please continue to share the fun you have at home and the toys and games your children like to play with.



Light



Dark

<p>Foundations for Literacy</p> <p>During our Literacy focus we will share sensory stories, including Funny Bones and Owl Babies. We will enjoy familiar songs and rhymes and use visuals to help us communicate. We will also be learning Christmas songs as we learn about the Christmas Story. We will explore lots of mark making both inside and in our garden area using a range of different tools and media.</p>	<p>Foundations for Maths:</p> <p>During our Maths focus sessions we will be exploring maths concepts, focusing on 1:1 correspondence and number value. We will be copying and following patterns using a range of resources. We will be counting objects in the environment as we explore the learning resources. These will be explored through real life experiences, planned play and adult led activities.</p>	<p>Understanding the world</p> <p>This Term we will be noticing and learning about changed in the environment e.g. weather (hot/cold) and choosing appropriate clothing.</p> <p>We will be using the materials that Autumn provides to explore textures and materials e.g. leaves, twigs and conkers.</p>	<p>Fine Motor Skills</p> <p>Ash Class will have lots of opportunities this term to develop our fine motor skills through the use of tools and different apparatus. Whilst exploring clothing for different weather, Ash class will be developing their self-help skills by using zips and buttons.</p>
<p>Art/Design</p> <p>This term we will be exploring different colours and textures, using a multisensory approach. Ash Class will be exploring the textures of Autumn using pumpkins, leaves and twigs.</p> 	<p>Fun With Foods</p> <p>Foods can cause anxieties for our pupils with ASD. Ash Class will be following the Fun with Food programme to help develop your child's tolerance of different smells and textures. This Term we will be working on dry food materials.</p>	<p>Therapies</p> <p>Ash Class will be accessing</p> <ul style="list-style-type: none"> • Cleverfingers • Write from the start • Gong Therapy • Therapeutic Music • Brushing • Compressions • Sensory Circuits • SLIC support • OT support <p>As required following observations and Assessments by our therapists</p>	<p>PSHE (Personal, social and health education) and RSE</p> <p>Ash Class will be building on our positive relationships with adults and peers in their class, getting to know our friends, sharing space and resources with others. We are developing awareness of our routines and settling in the classroom finding out where resources belong.</p>
<p>Physical Education:</p> <p>PE will be on a Friday, this term we are going to be doing Gymnastics, finding different ways to move along apparatus and using different body parts.</p> <p>Swimming will be on a Wednesday. We are continuing to develop our confidence in the water.</p>	<p>Communication/Language</p> <p>Personalised Speech and Language targets will be created to enable early communication. These include initiation, nursery rhymes, Curiosity Programme, Attention Autism (Explore only), EHCP targets, 1-1 interventions, and Intensive Interaction.</p>	<p>PE Enrichment</p> <p>The pupils will have PE Enrichment on Tuesday afternoons.</p> <p>This term it will be Trampolining, Ash class will learn to jump and control their landings. Trampolining provides opportunities for enhanced movement pattern, exercise and recreation.</p>	<p>Music</p> <p>Some of Ash class will be experiencing 'Gong Therapy' during our music session this term. This aims to support regulation and wellbeing.</p> <p>Ash Class will be enjoying music sessions where we will be learning to respond to music and follow simple instructions. We will explore lots of different instruments and the sounds they make.</p>