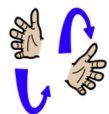


Core signs for our topic this term.



Our topic this term is 'Everyday Heroes', here are some related signs for you to practice.

nurse



cook



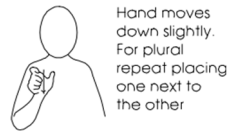
fix



clean



hero



safe



Don't forget to say the words as you sign!



Cherry Class Key stage 2 Information for parents Term 1 2023

Class Teacher and Teaching Assistants:

Laura Botelho (Teacher)
Kate Jarvis (ITT Trainee Teacher)
Rachel Johnson (TALL)
Tracey Skinner (TA)
Sian Hatcher (TA)
Ian Hallett (TA)

Experiences/visits/visitors:

As part of this exciting topic we will be being visited by some every day heroes seen around school.



Every day heroes

Regular events:

PE Enrichment each Tuesday afternoon will be 'our Woodland walk'.
PE will take place each Thursday morning (Please make sure pupils bring in their PE kits for this day).
Swimming will take place each Friday (Please make sure pupils bring in their swim kits for this day).

General Information:

Welcome back! We hope you had a lovely summer. We are looking forward to completing lots of activities linked to our new topic which is 'Every day heroes'.

Homework and contact:

Please share books with your child every day.
Please support our use of PECs by practicing at home as often as possible.
The Home/School Journals are in place for us both to write in so we can keep each other up to date about your children.
If you have any questions please contact the school office or speak to one of the team when dropping off or picking up.

Ideas for home:

Make your child aware of those people around us who help us. These should be those unsung heroes such as the Post person, the shopping assistant, the doctor etc.
Have lots of fun playing together with your child with their favourite toys this will help with their communication, vocabulary and engagement.

Foundations for Literacy

During our Literacy focus sessions we will listen to lots of appropriate stories about Real life Heroes. We will share sensory stories too. We will explore lots of mark making both inside and in our garden area. We will enjoy familiar songs and rhymes and visuals to help us communicate.

Foundations for Maths:

During our Maths focus sessions we will be exploring maths concepts including number, shape, size, sequencing, measure and time. These will be explored through real life Experiences, planned play opportunities and adult led activities.

Understanding the world

This Term we will be exploring our understanding of the roles of Everyday Heroes within the school community. We will focus on the school cooks, The maintenance team and the medical team who all help to keep us happy, safe and cared for when at school. We will do this through visits, exploratory play opportunities and stories.

Fine Motor Skills

Cherry Class will have lots of opportunities this term to develop our fine motor skills through the use of tools and apparatus used by our school everyday heroes. We will explore cleaning tools, maintenance tools, and medical tools such as thermometers, bandages and liquid syringes.

Art/Design

We will be exploring colour mixing and exploring using a range of conventional and unconventional tools to do so such as Brooms, syringes and cooking utensils.

Fun With Foods

Foods can cause anxieties for our pupils with ASD. Cherry Class will be following the Fun with Food programme to help develop your child's tolerance of different smells and textures. This Term we will be working on dry food materials

Therapies

Cherry Class will be accessing

- Cleverfingers
- Write from the start
- Gong Therapy
- Therapeutic Music
- Brushing
- Compressions
- Sensory Circuits
- SLIC support
- OT support

As required following observations and Assessments by our therapists

PSHE (Personal, social and health education) and RSE

Cherry Class will be learning about how our emotions feel within our own bodies so that we can begin to understand our own feelings and those of others. We will focus on the feelings of happy, sad and angry.

Physical Education:

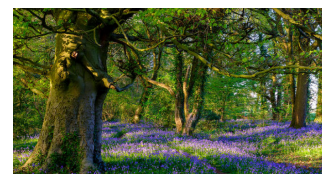
PE will be on Thursday mornings this term. Many of these sessions will take place outside so please ensure your child has weather appropriate clothing to join in. Swimming will be on Fridays. Our focus will be water confidence, developing independence in the pool and changing and floating safely on our backs.

Communication/Language

Personalised Speech and Language targets will be created to enable early communication. These include initiation, nursery rhymes, Curiosity Programme, Attention Autism (Explore only), EHCP targets, 1-1 interventions, and Intensive Interaction.

PE Enrichment

The pupils will have PE Enrichment on Tuesday afternoons. This term it will be Woodland walk.



Music

Some of Cherry class will be experiencing 'Gong Therapy' during our music session this term. This aims to aid regulation and wellbeing.

Some of Cherry class will be enjoying a music session where we will be learning to respond to music and follow simple instructions. We will explore lots of different instruments too.