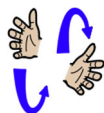


## Core signs for our topic this term.



Our topic this term is 'Everyday Heroes', here are some related signs for you to practice.

nurse



cook



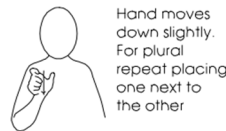
fix



clean



hero



Hand moves down slightly. For plural repeat placing one next to the other

safe



Don't forget to say the words as you sign!



## Chestnut Class Key stage 2 Information for parents Term 1

IfieldSchool

### Class Teacher and Teaching Assistants:

Jane Thomas (Teacher)  
Megan Bullivant (TALL)  
Clair Fitzsimons (TA)  
Harshika Liyanage Dona (TA)  
Kate Phillips (TA)  
Tracey Gibson (TA)

### Experiences/visits/visitors

As part of our exciting topic this term, we will be having visits from our 'every day heroes'.



## Every day heroes

### Regular events:

PE Enrichment each Tuesday afternoon will be 'Hydro pool' ( please send in kit)  
PE each Wednesday Morning (Please make sure pupils bring in their PE kits for this day)  
Swimming each Monday (Please make sure pupils bring in their swim kits for this day)

### General Information:

Welcome back! We hope you had a lovely summer. We are looking forward to lots of activities linked to our new topic 'Every day heroes'.

### Homework and contact

Please share books with your child every day. Please support our use of PECs by practicing at home as often as possible.

The Home/School Journals are in place for us both to write in so we can keep each other up to date about your children.

### Ideas for home:

- Helping around the house eg. Washing up, folding clothes, sweeping.
- Pointing out people who help us in our community eg, going for walks and noticing: rubbish collection people, emergency services and restaurant staff.
- Practice brushing your teeth using the tooth song: [The Tooth Brushing Song](#)  
[2-minute tooth brushing song for kids - YouTube](#)

<b>Foundations for Literacy</b> <p>During our Literacy focus sessions we will listen to lots of appropriate stories about 'Real Life Heroes'. We will share sensory stories and will explore lots of mark making both inside and outdoors within our garden area. We will enjoy familiar songs and rhymes and use lots of visuals to help us communicate.</p>	<b>Foundations for Maths:</b> <p>During our Maths focus sessions we will be exploring maths concepts including number, shape, size, sequencing, measure and time through real life experiences and planned play opportunities.</p>	<b>Understanding the world</b> <p>This Term we will be exploring our understanding of the roles of our 'Everyday Heroes' within the school community. We will focus on the school cooks, the maintenance team and the medical team who all help to keep us happy, safe and cared for when at school. We will do this through visits, exploratory play opportunities and stories.</p>	<b>Fine Motor Skills</b> <p>Chestnut Class will have lots of opportunities this term to develop our fine motor skills through the use of tools and apparatus used by our school everyday heroes. We will explore cleaning tools, maintenance tools, and medical tools such as thermometers, bandages and liquid syringes.</p>
<b>Art/Design</b> <p>We will be exploring colour mixing and exploring using a range of conventional and unconventional tools to do so such as Brooms, syringes and cooking utensils.</p>	<b>Fun With Foods</b> <p>Foods can cause anxieties for our pupils with ASD. Chestnut Class will be following the Fun with Food programme to help develop your child's tolerance of different smells and textures. This Term we will be working on dry food materials</p>	<b>Therapies</b> <p>Cherry Class will be accessing</p> <ul style="list-style-type: none"> <li>• Cleverfingers</li> <li>• Write from the start</li> <li>• Gong Therapy</li> <li>• Therapeutic Music</li> <li>• Brushing</li> <li>• Compressions</li> <li>• Sensory Circuits</li> <li>• SLIC support</li> <li>• OT support</li> </ul> <p>As required following observations and Assessments by our therapists</p>	<b>PSHE (Personal, social and health education) and RSE</b> <p>Chestnut Class will be learning about how our emotions feel within our own bodies so that we can begin to understand our own feelings and those of others. We will focus on the feelings of happy, sad and angry.</p>
<b>Physical Education:</b> <p>PE will be on Wednesday mornings this term. Many of these sessions will take place outside so please ensure your child has weather appropriate clothing to join in. Swimming will be on a Monday. Our focus will be water confidence, developing independence in the pool and changing and floating safely on our backs.</p>	<b>Communication/Language</b> <p>Personalised Speech and Language targets will be created to enable early communication. These include initiation, nursery rhymes, Curiosity Programme, Attention Autism (Explore only), EHCP targets, 1-1 interventions, and Intensive Interaction.</p>	<b>PE Enrichment</b> <p>The pupils will have PE Enrichment on Tuesday afternoons. This term it will be use of the Hydro pool.</p>	<b>Music</b> <p>The pupils will experience either gong therapy within their music lessons or participate in group music making with opportunities to develop their individual targets using musical equipment.</p>